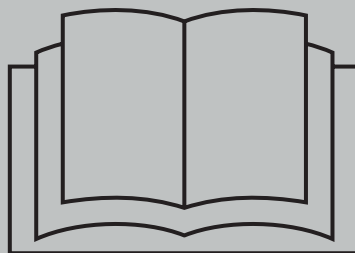


# **REPAIR MANUAL**

## **H-300/4 SAP**





## INDEX

<b>HEAD ASSEMBLY</b>	<b>5</b>
<b>SHELL ASSEMBLY</b>	<b>9</b>
<b>TRASMISSION PARTS</b>	<b>14</b>
<b>CONNECTING RODS</b>	<b>18</b>
<b>SELF CENTERING (P-26/P-30)</b>	<b>19</b>
<b>SELF CENTERING (P-32/P-45)</b>	<b>20</b>
<b>SEAL CAGE</b>	<b>21</b>
<b>HEAD SAP (P-26/P-30)</b>	<b>22</b>
<b>HEAD SAP (P-32/P-45)</b>	<b>24</b>
<b>PISTON KIT (P-26)</b>	<b>26</b>
<b>PISTON KIT (P-28)</b>	<b>28</b>
<b>PISTON KIT (P-30)</b>	<b>30</b>
<b>PISTON KIT (P-32)</b>	<b>32</b>
<b>PISTON KIT (P-35)</b>	<b>34</b>
<b>PISTON KIT (P-40)</b>	<b>36</b>
<b>PISTON KIT (P-45)</b>	<b>38</b>



## HEAD ASSEMBLY



Head assembly H300/4 SAP.

Fig. 01



Mounting kit repair

Fig. 02



Put O-Ring in Basket Cap.

Fig. 03



Put Bak ring, making sure that it is to the outside as well as the chamfer Bak Ring (indicated with the pen).

Fig. 04



First side.

Fig. 05



Perform the same process on the other hand, stressing attention on the chamfer bak ring.

Fig. 06



Mounted.

Fig. 07



Fit the pressure spring (Pos. 15) in the Pressure Valve.

Fig. 08



Set mounted.

Fig. 09



Place the set in Basket Cap.

Fig. 10



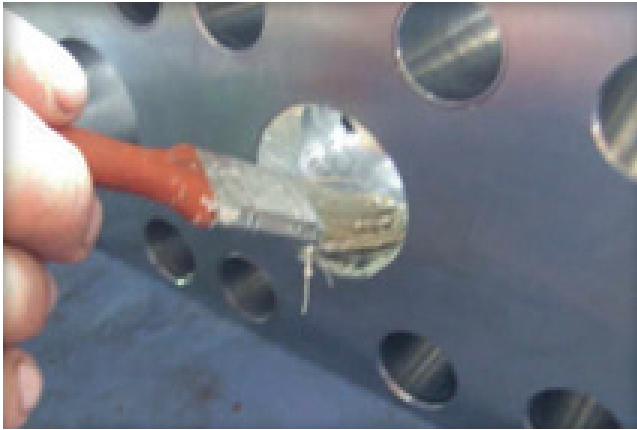
Attach the spring in Basket Cap, with the help of a key to attach it securely.

Fig. 11



Set mounted.

Fig. 12



Skip desingripante grease on the head with a brush.

Fig. 13



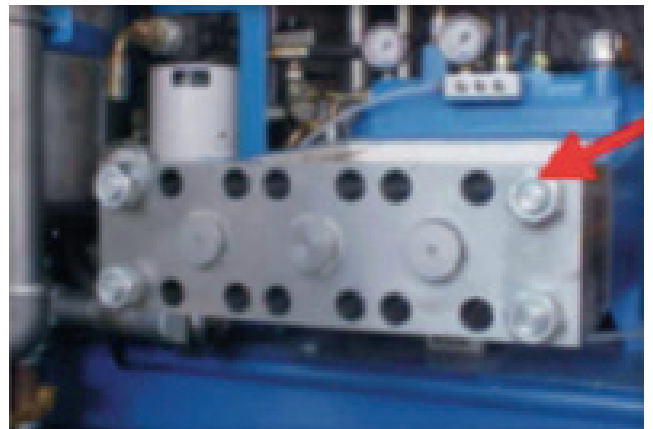
Pass desingripante grease also in Basket cap and place it on the head.

Fig. 14



Place the Basket cap on the head with the help of Nylon beater.

Fig. 15



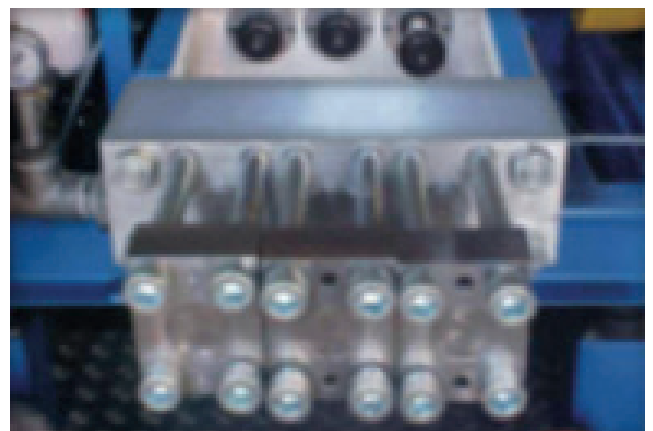
Fix using the nuts with a torque of 320 Nm.

Fig. 16



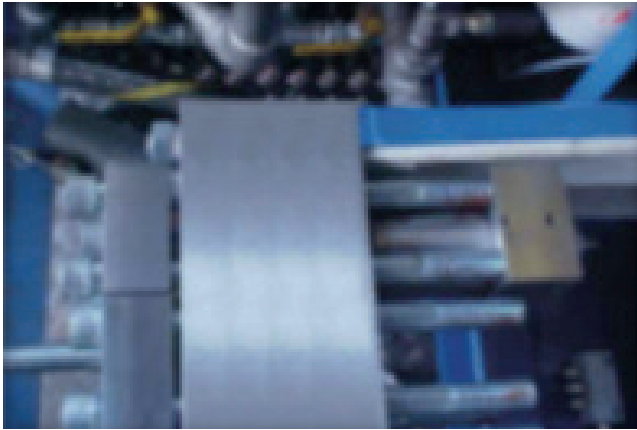
Position the flanges.

Fig. 17



Fit the flange to the head.

Fig. 18



Auto Centering mount and Piston Kit.

Fig. 19



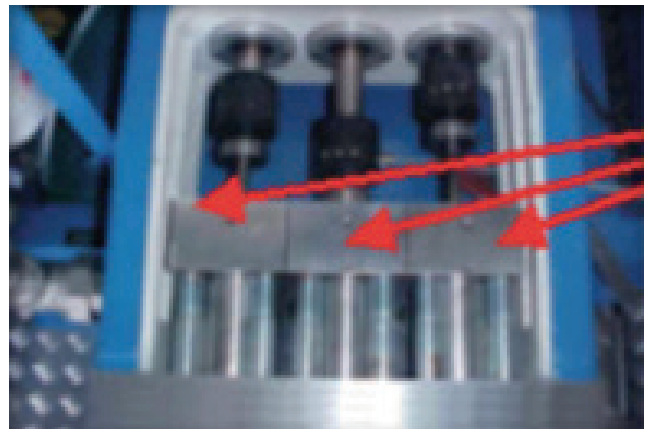
With the Assistance of an allen key, pull the screws, pressing the "X".

Fig. 20



a) With the aid of a torque wrench, tighten the screws "X", with torque of 320 Nm.  
b) With the Assistance of an allen Wrench, pull the grub screws in "X".

Fig. 21



Check alignment

M24x375 screws have capacity of 20 torques, after this amount may lose their mechanical characteristics.

Fig. 22



## SHELL ASSEMBLY

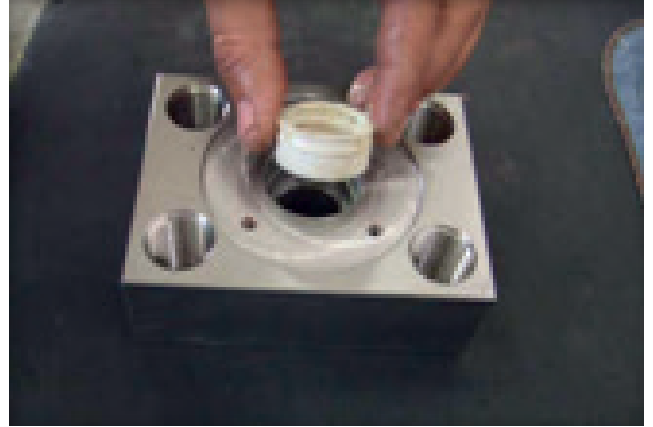
**For fitting shirt SAP separate the following items:**

1. Piston - 2. Allen screws (12 pcs) - 3. Disk Support - 4. Vedaseal - 5. Straight Connection
6. Flange - 7. Seal Metallic - 8. O-ring - 9. Sliding Sleeve - 10. O-ring - 11. Shirt - 12. Support ring infer.
13. Scraper ring - 14. Lamela Kevler - 15. Lamela Rami - 16. Super support ring - 17. Spring
18. Support sleeve - 19. Seal top Metallic



1° - Piston SAP dismantled.

Fig. 23



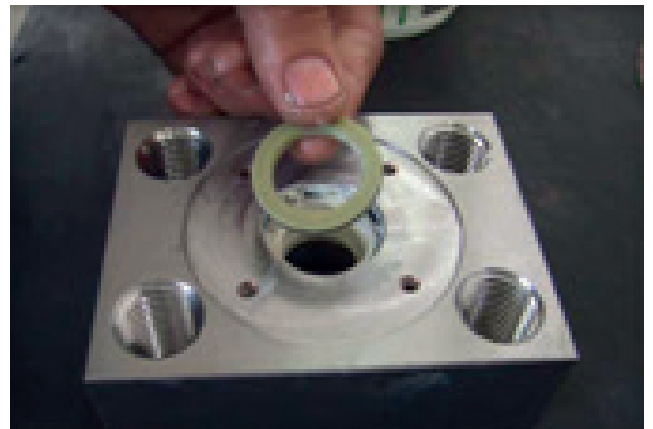
2° - Insert the Sliding Sleeve in Flange.

Fig. 24



3° - Overlap with the O-ring.

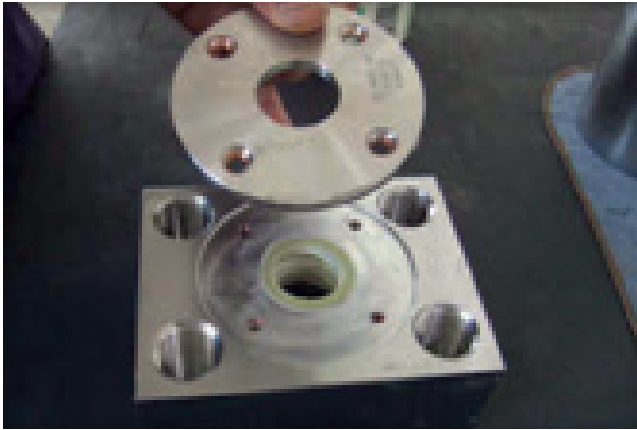
Fig. 25



4° - Enter the Vedaseal with the opening facing shirt use grease "Rocol" type for better sealing.

Fig. 26

*(continues on the next page)*



5° - Cover the pool using the Disk Support.

Fig. 27



6° - Screw Disk Support "X".

Fig. 28



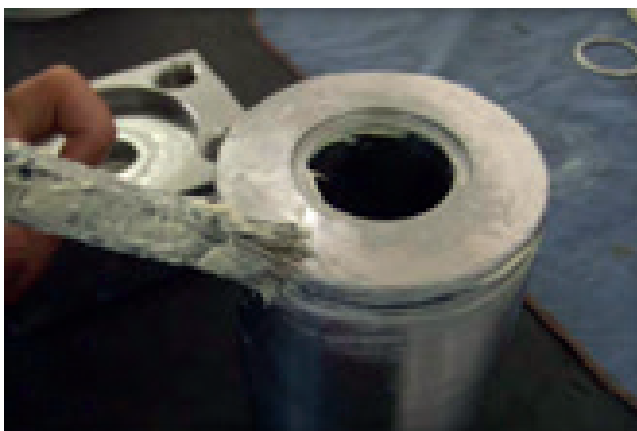
7° - Enter the O-Ring on tear shirt.

Fig. 29



8° - When installing the shirt with the flange, the O-ring will be placed in recess.

Fig. 30



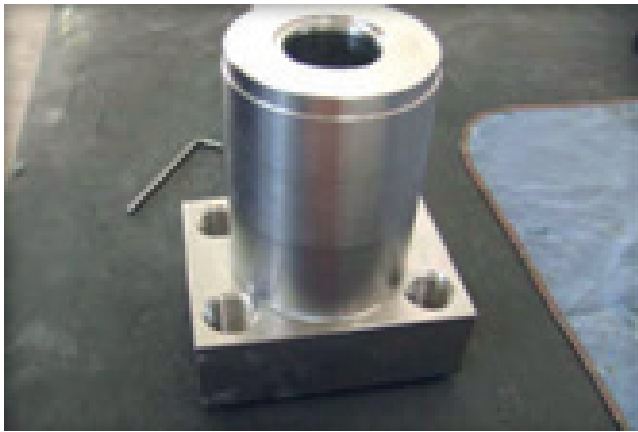
9° - Use grease type "Rocol" for better sealing.

Fig. 31



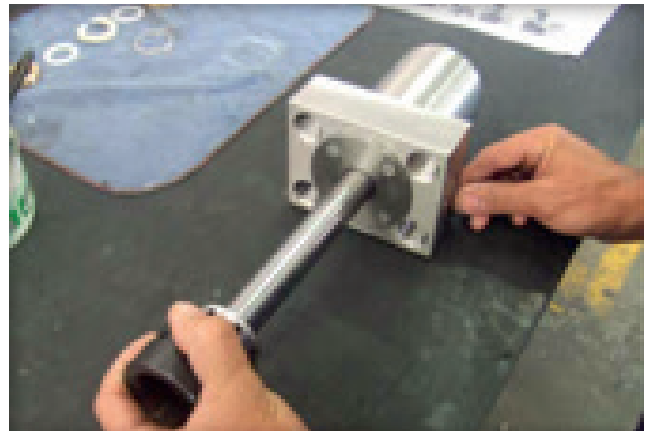
10° - Mount the shirt on SAP Flange.

Fig. 32



11°

Fig. 33



12° - Insert the piston in the set.

Fig. 34



13° - Turn the complete unit and enter the Lower support ring with the bevel facing down.

Fig. 35



14° - Use a Nylon beater to pull the components.

Fig. 36



15° - Insert the first scraper ring.

Fig. 37



16° - Use a Nylon beater to pull the components.

Fig. 38



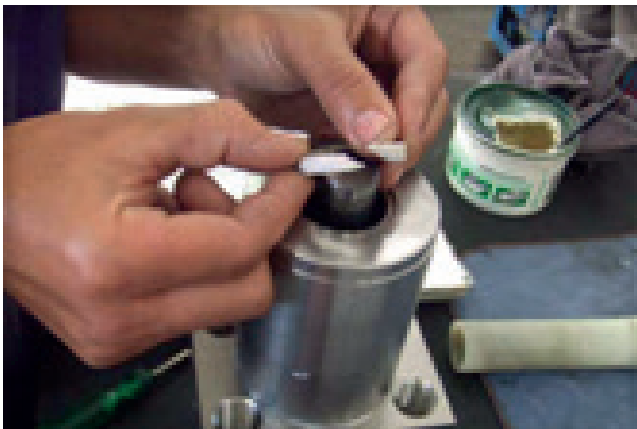
**17°** - Enter Lamela Klever.

Fig. 39



**18°** - Use a Nylon beater to pull the components.

Fig. 40



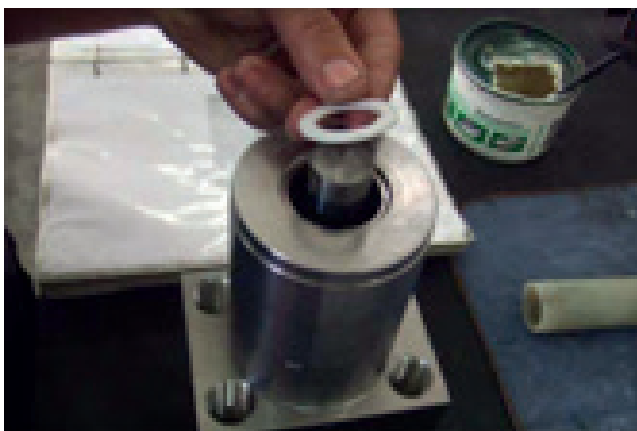
**19°** - Enter Rami slide, taking care to leave 180° away from the rip and tear this the anterior lamella.

Fig. 41



**20°** - Use a Nylon beater to pull the components.

Fig. 42



**21°** - Insert the other scraper ring.

Fig. 43



**22°** - Use a Nylon beater to pull the components.

Fig. 44



**23°** - Place the upper support ring (no bevel).

Fig. 45



**24°** - Use a Nylon beater to pull the components.

Fig. 46



**25°** - Insert the spring.

Fig. 47



**26°** - Insert the bushing Support.

Fig. 48



**27°** - Insert the upper metal seal.

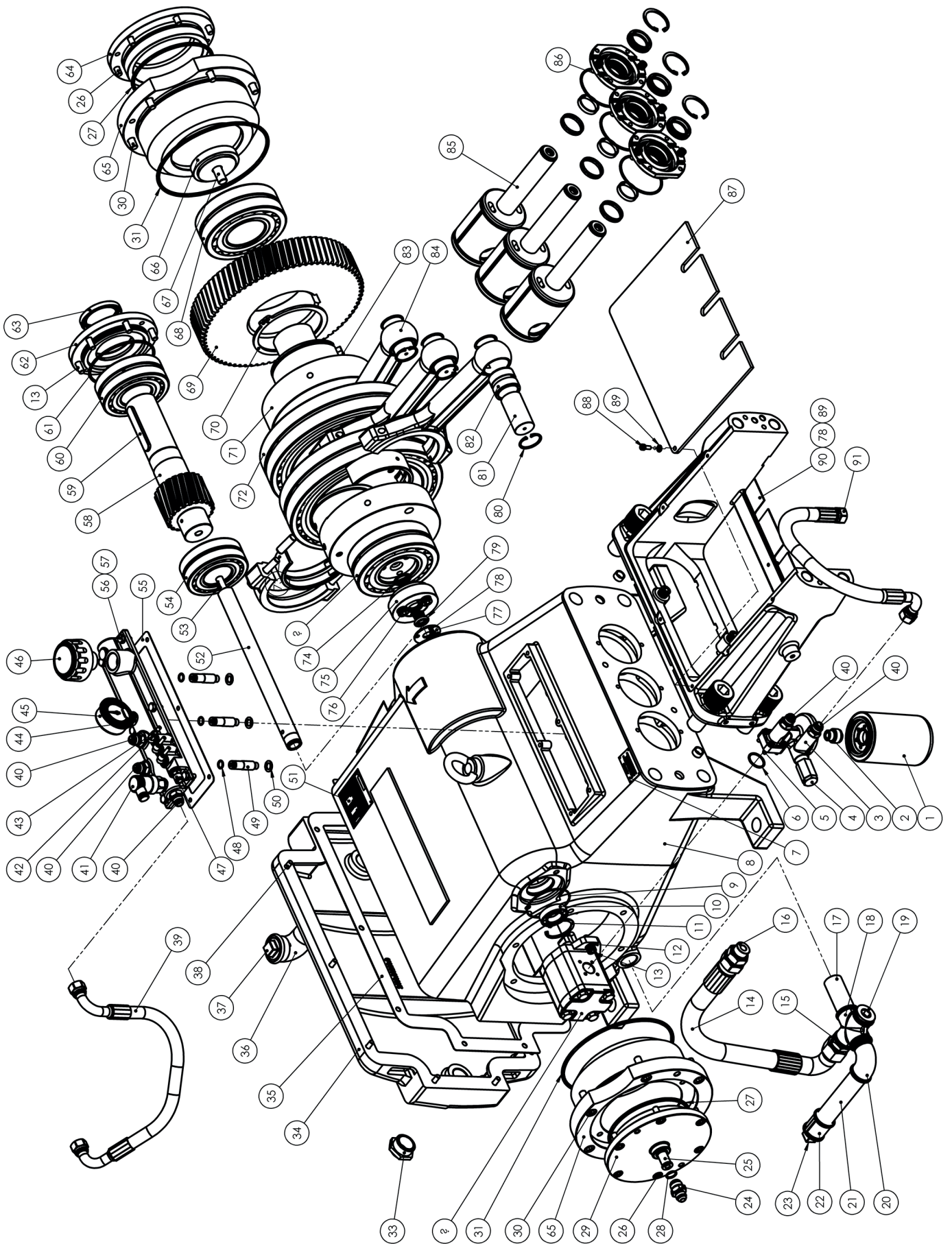
Fig. 49



**28°** - Mounted piston.

Fig. 50

TRASMISSION PARTS H300/4 - CODE 1010.01107.2



**TRANSMISSION PARTS LIST H 300-4 - CODE 1010.01107.2**

ITEM	CODE	DESCRIPTION	QTY.
1	3000.02147.0	OIL FILTER	1
2	2320.01708.0	3/4" BSP X 3/4" UNF REDUCING NIPPLE	1
3	1110.03036.0	LUBRICATION MANIFOLD	1
4	3000.01020.0	RELIEF VALVE	1
5	1200.00222.0	ALLEN SCREW M6X25mm	4
6	1300.00256.0	O-RING	1
7	3000.01794.0	TORQUE NAMEPLATE	1
8	1010.01106.0	HULL 300-4	1
9	1300.00582.0	O-RING	1
10	1700.00195.0	RIGID BALL BEARING	1
11	1200.00826.0	ELASTIC RING	1
12	1200.00103.0	PRESSURE WASHER M10	2
13	1200.00140.0	ALLEN BOLT M10X25mm	8
14	1010.00792.0	PUMP-OIL PUMP CONNECTION HOSE	1
15	2320.00667.0	1" BSP X 1.5/16" UNF NIPPLE	1
16	2320.00992.0	NETWORK NIPPLE 1.5/16" UNF JIC X 1/16" VNF PL	1
17	2370.00501.0	SCH 40 150mm PIPE	1
18	2320.00237.0	1" BSP YOKE	1
19	2320.01677.0	BMA 1" BSP MAGNETIC PLUG	1
20	2320.00229.0	MF 1" BSP ELBOW	1
21	2370.00501.0	SCH 40 150mm PIPE	1
22	2320.00924.0	1" BSP SLEEVE	1
23	2320.00214.0	1" BSP PLUG	1
24	2320.00778.0	M22 X 1.5 PL X 3/4" UNF JIC REDUCING NIPPLE	1
25	1110.02304.0	GLYD ROTOR SHAFT	1
26	1200.00229.0	ALLEN SCREW M10x20mm	12
27	1300.00439.0	O-RING	2
28	1300.00848.0	O-RING	1
29	1110.02264.0	CRANKSHAFT COVER 300-4	1
30	1200.00293.0	ALLEN SCREW M12x35mm	12
31	1300.00438.0	O-RING	2
32	3000.01773.0	LUBRICATION PUMP	1
33	3000.00208.0	OIL LEVEL SIGHT GLASS	1
34	1110.03254.0	COVER L300-4	1
35	1300.00824.0	JUNTA COVER L300-4	1
36	2320.01610.0	1.1/4" BSP ELBOW	1
37	2320.01611.0	1.1/4" BSP PLUG	1
38	1200.00268.0	ALLEN SCREW M8X30mm	10
39	1010.00731.0	DUCT-CRANKSHAFT CONNECTION HOSE	1
40	2320.00283.0	NIPPLE 3/4" UNF PI x 3/4" UNF JIC	5
41	1010.01074.0	PRESSURE SWITCH	1
42	2320.00309.0	ADJUSTABLE L CONNECTION 1/4"x6mm	3



**TRANSMISSION PARTS LIST H 300-4 - CODE 1010.01107.2**

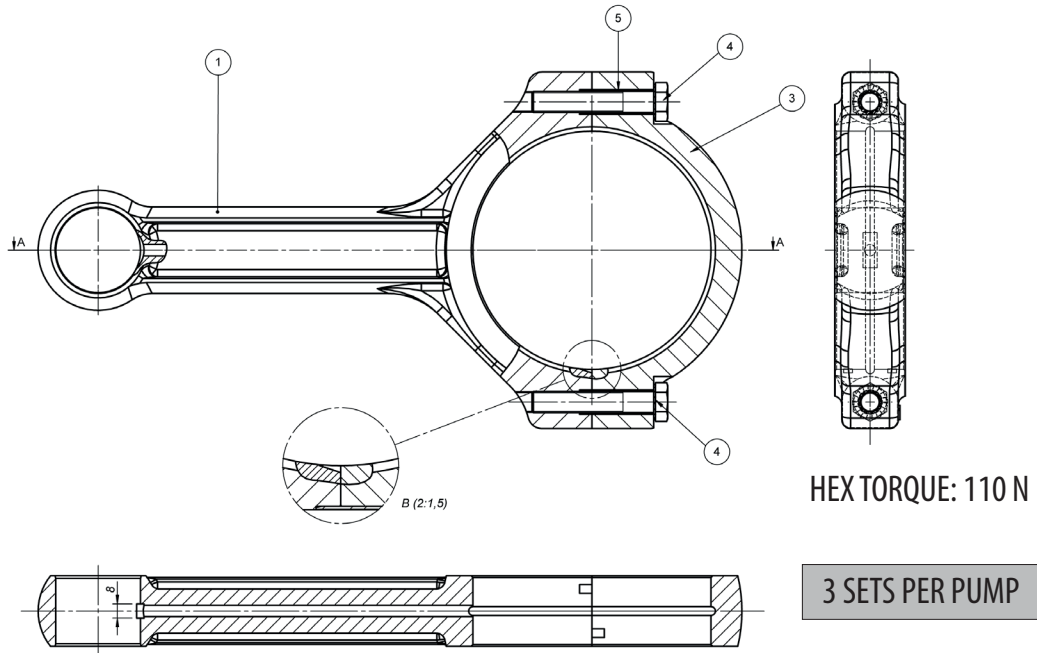
<b>ITEM</b>	<b>CODE</b>	<b>DESCRIPTION</b>	<b>QTY.</b>
43	2370.00605.0	HOSE PU Ø6mm	1
44	1110.03092.0	LUBRICATION DUCT	1
45	3000.00321.0	PRESSURE GAUGE	1
46	3000.00119.0	BREATHER 1" BSP	1
47	2320.00563.0	STRAIGHT CONNECTION 1/4"x10mm	1
48	1300.00213.0	O-RING	3
49	1110.02620.0	DUCT CONNECTING PIPE	3
50	1300.00176.0	COPPER RING	3
51	3000.00120.0	NAMEPLATE	1
52	1110.02621.0	EXPANDER	1
53	1200.00300.0	WOODRUFF KEY	1
54	1700.00131.0	ROTO GLYD BACKBOARD BEARING	1
55	1300.00224.0	OIL DUCT GASKET	1
56	1200.00828.0	HEX SCREW M8x20mm	6
57	1200.00402.0	FLAT WASHER M8	6
58	1110.00876.0	PINION L300-4	1
59	1200.00283.0	COTTER	1
60	1700.00115.0	ROTO GLYD BACKBOARD BEARING	1
61	1300.00381.0	O-RING	1
62	1110.02205.0	TRANSMISSION AXIS	1
63	1300.00478.0	BEARING	1
64	1110.00843.0	CRANKSHAFT COVER L300-4	1
65	1110.00845.0	BEARING BOX	2
66	1110.00848.0	SUPPORT BUSHING	1
67	1200.00186.0	ALLEN SCREW M16X40mm	1
68	1700.00133.0	ROTO GLYD BACKBOARD BEARING	2
69	1110.00877.0	GEAR L300-4	1
70	1200.00285.0	ELASTIC RING	1
71	1010.00773.0	CRANKSHAFT L300-4	1
72	1700.00132.0	ROTO GLYD BACKBOARD BEARING	2
73	1700.00134.0	BEARING L300-4	3
74	1300.00254.0	O-RING	1
75	1110.01009.0	SUPPORT BEARING	1
76	1200.00184.0	ALLEN SCREW M12x30mm	3
77	1110.03064.0	ROTO GLYD COVER H120-H200-H300	1
78	1200.00161.0	ALLEN SCREW M6X12mm	5
79	1300.00502.0	ROTO GLYD	1
80	1200.00278.0	ELASTIC RING 1-39	6
81	1100.00196.0	ROD PIN	3
82	1700.00135.0	ROD BUSHING	3
83	1200.00284.0	KEY	1



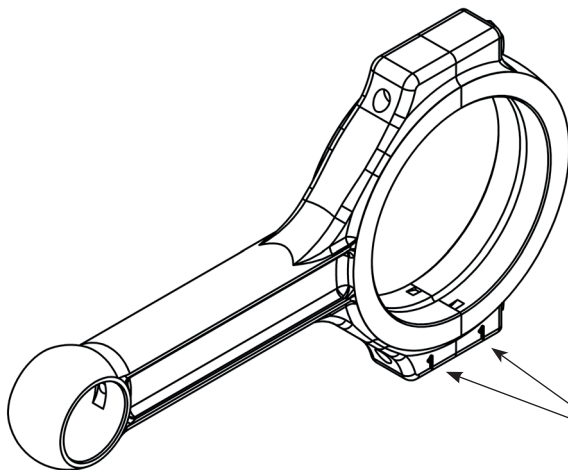
**TRANSMISSION PARTS LIST H 300-4 - CODE 1010.01107.2**

<b>ITEM</b>	<b>CODE</b>	<b>DESCRIPTION</b>	<b>QTY.</b>
84	1010.01113.0	ROD L300-4	3
85	1010.00885.0	GUIDE PISTION	3
86	1010.01097.0	SEAL CAGE	3
87	1110.00840.0	PISTION COVER	1
88	1200.00265.0	ALLEN SCREW M6X15mm	1
89	1200.00191.0	FLAT WASHER M6	5
90	1110.03223.0	PISTON COVER	1
91	1010.01489.0	MANIFOLD-DUCT CONNECTION HOSE	1

## CONNECTING RODS - CODE 1010.01113.0



ITEM	CODE	DESCRIPTION	QTY.
1	1110.02207.0	ARM ROD	1
2	1200.00190.0	TOOTHED WASHER M12	2
3	1110.02210.0	MANCAL ROD	1
4	1200.00187.0	HEX BOLT M12X70	2
5	1200.00881.0	ELASTIC GUIDE BUSHING	2

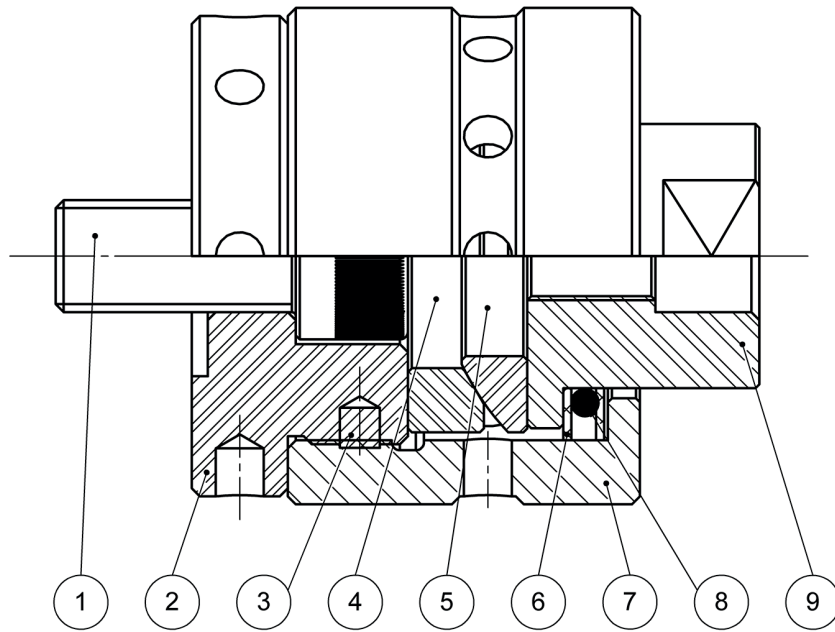


**ATTENTION!**  
ASSEMBLE WITH NUMBERS  
FACING THE SAME SIDE

**⚠ Attention!**

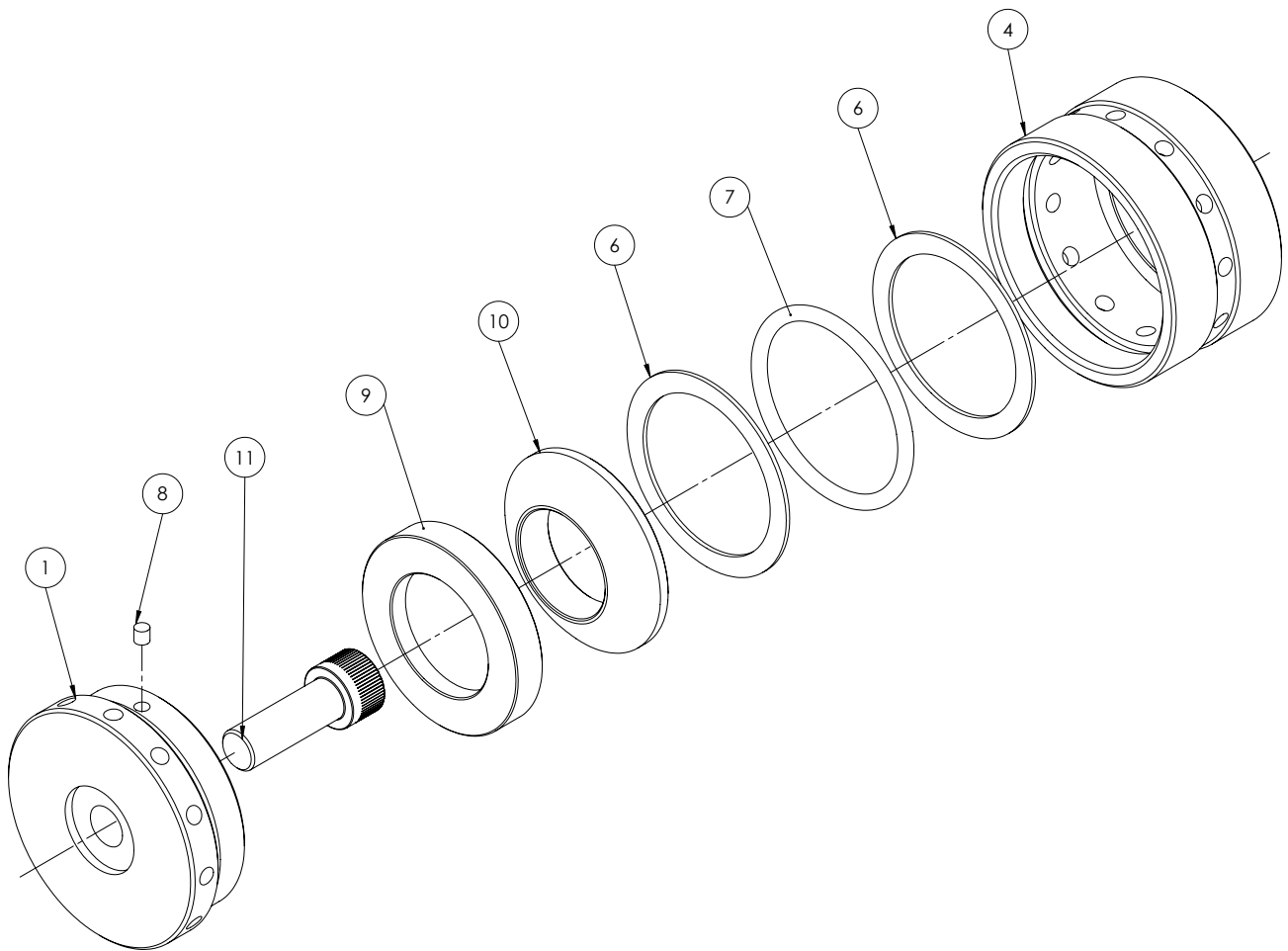
- ▶ All connecting rods are numbered.
- ▶ Always assemble arm and bearing of the connecting rod so that the unsequenced number is shown.
- ▶ Never replace arms and bearing by a connecting rod from a different set.

**SELF CENTERING (P26 / P30) - CODE 1010.00268.0**



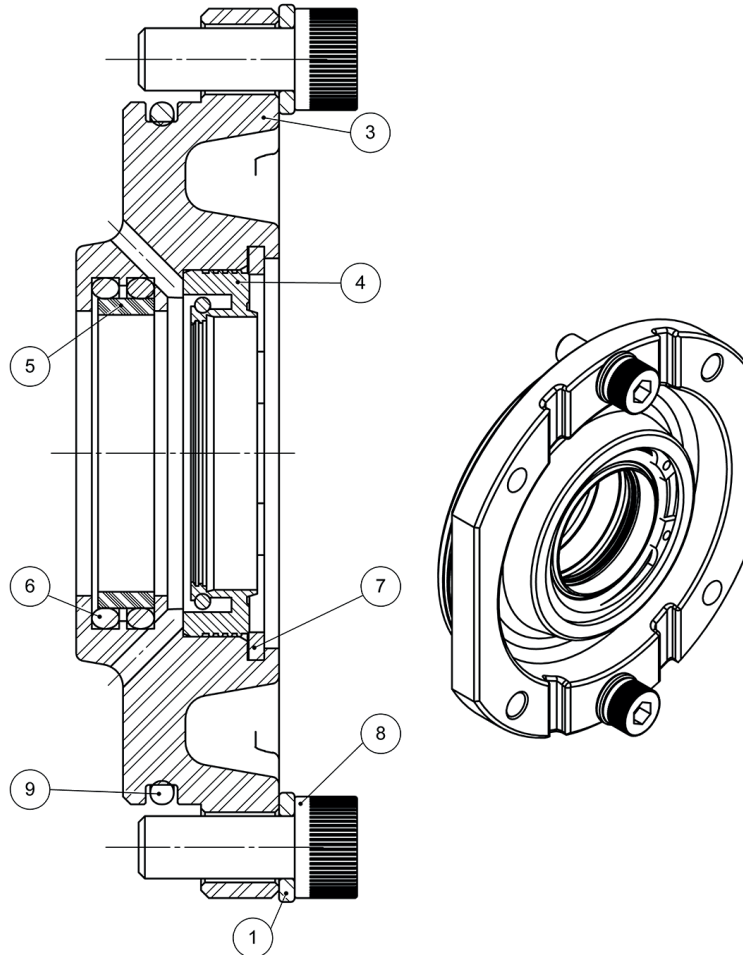
ITEM	CODE	DESCRIPTION	QTY.
1	1200.00297.0	ALLEN SCREW M14x30 DIN 919	1
2	1110.00719.0	SELF CENTERING P-14 / P-30	1
3	2380.01467.0	SPIGOT	1
4	1110.00631.0	SPHERICAL RING	1
5	1110.00630.0	SPHERICAL RING	1
6	1110.00724.0	BACK UP RING	2
7	1110.00721.0	SELF CENTERING SCREW	1
8	1300.00361.0	O-RING	1
9	1110.00820.0	CONECT BUSHING	1

**SELF CENTERING (P32 / P45) - CODE 1010.00419.0**



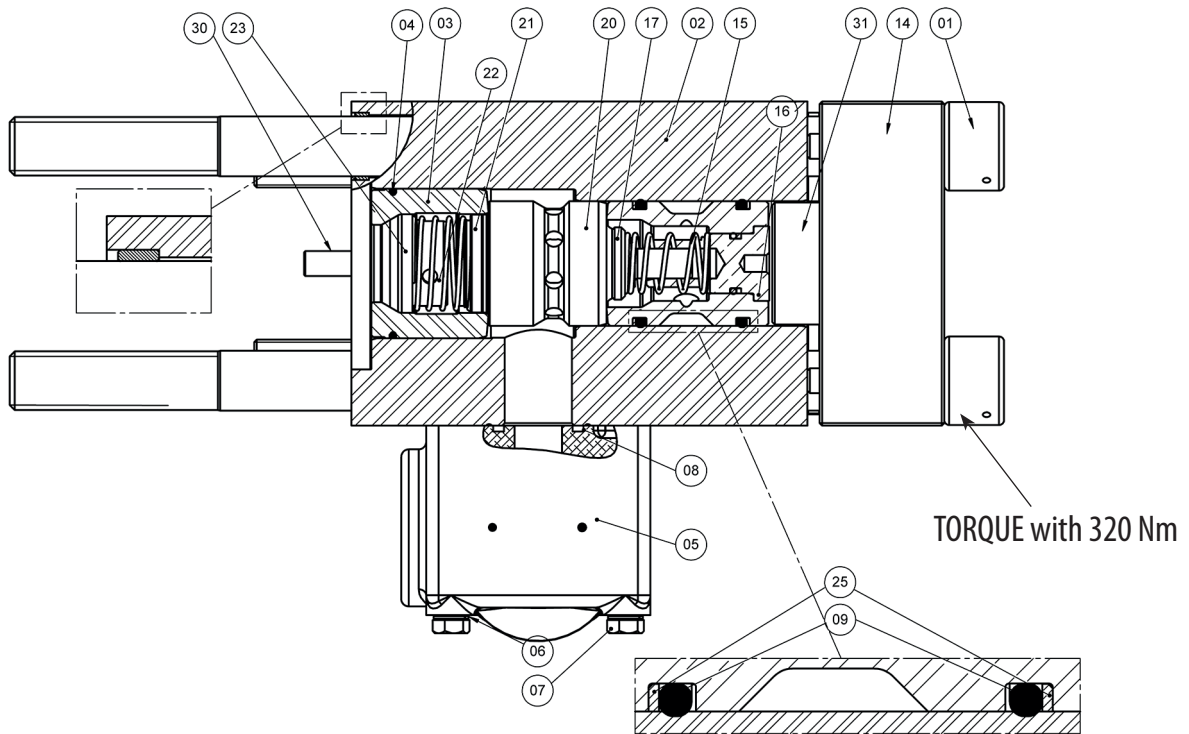
ITEM	CODE	DESCRIPTION	QTY.
1	1110.01335.0	SELF CENTERING	1
4	1110.01334.0	CONNECT BUSHING	1
6	1110.01333.0	BACK UP RING	2
7	1300.00604.0	O-RING 60x5	1
8	1110.01028.0	SPIGOT	1
9	1110.01324.0	SPHERICAL RING	1
10	1110.01323.0	SPHERICAL RING	1
11	1200.00423.0	ALLEN SCREW M14x40	1

**SEAL CAGE - CODE 1010.01097.0**

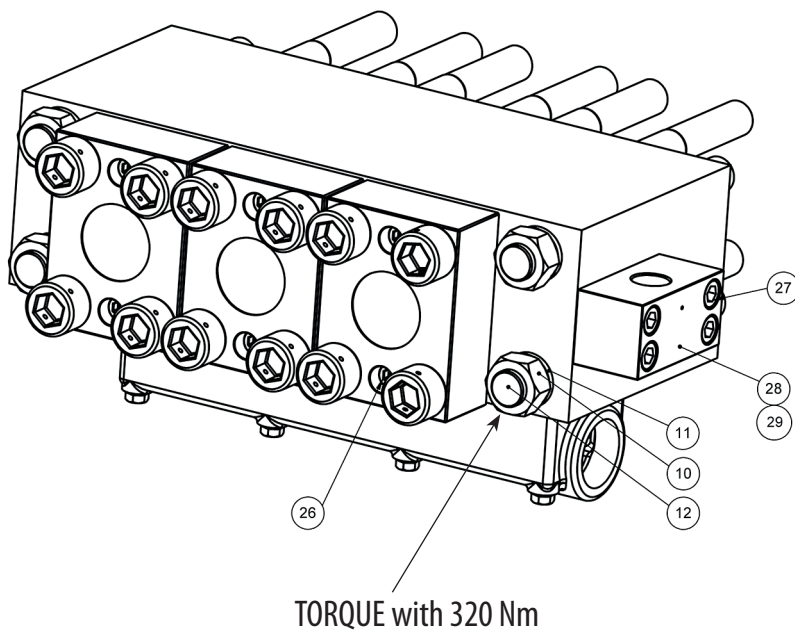


*	ITEM	CODE	DESCRIPTION	QTY.
	1	1200.00107.0	PRESSURE WASHER	2
* Note: Common wear parts or disposable				
	3	1110.02618.0	SEAL CAGE	1
	4	1300.00750.0	SEAL	1
	5	1300.00751.0	SLIDING RING	1
	6	1300.00191.0	O-RING	2
	7	1200.00154.0	ELASTIC RING	1
	8	1200.00550.0	ALLEN SCREW M8X20mm	2
	9	1300.00117.0	O-RING	1

HEAD SAP (P-26/P-30) - CODE 1010.00316.0



ASSEMBLE THE BACK RING (POS.25).  
PUT THE CHAMFER ACCORDING TO DETAILS ABOVE.



**HEAD SAP (P-26/P-30) PARTS LIST H 300-4 - CODE 1010.00316.0**

NOTE	ITEM	CODE	DESCRIPTION	QTY.
*	1	1200.00360.0	ALLEN SCREW	12
	2	1010.00759.0	HEAD	1
	3	1110.00872.0	SAP INTERMEDIATE	3
*	4	REPAIR KIT	O-RING	3
*	5	1110.01677.0	SUCTION DUTE	1
	6	1200.00107.0	PRESSURE WASHER	8
*	7	1200.00701.0	ALLEN SCREW	8
*	8	1300.00193.0	O-RING	3
*	9	REPAIR KIT	O-RING	6
	10	1200.00149.0	NUT	4
	11	1200.00363.0	PRESSURE WASHER	4
	12	1200.00359.0	THREADED STUD	4
	14	1110.01111.0	FLANGE	3
*	15	1500.00104.0	PRESSURE SPRING	3
*	16	1010.00104.0	SIX COVER	3
*	17	1100.00107.0	PRESSURE VALVE	3
*	20	1100.00108.0	DOUBLE SEAT	3
*	21	1100.00109.0	SUCTION VALVE	3
*	22	1500.00105.0	SUCTION SPRING	3
*	23	1110.01022.0	GUIDE SPRING	3
	25	REPAIR KIT	BACK RING	6
	26	1200.00163.0	ALLEN SCREW	6
	27	1200.00171.0	ALLEN SCREW	4
	28	1110.00948.0	RUPTURE DISC BLOCK	1
	29	1300.00106.0	O-RING	1
	30	1200.00369.0	GUIDE PIN	2
	31	1110.01339.0	DISTANCE PIN	3

Note: \* Common wear parts.

Note: \*\* 10 torque lifecycle (320 Nm) or 300 work hours (ITEM 27).





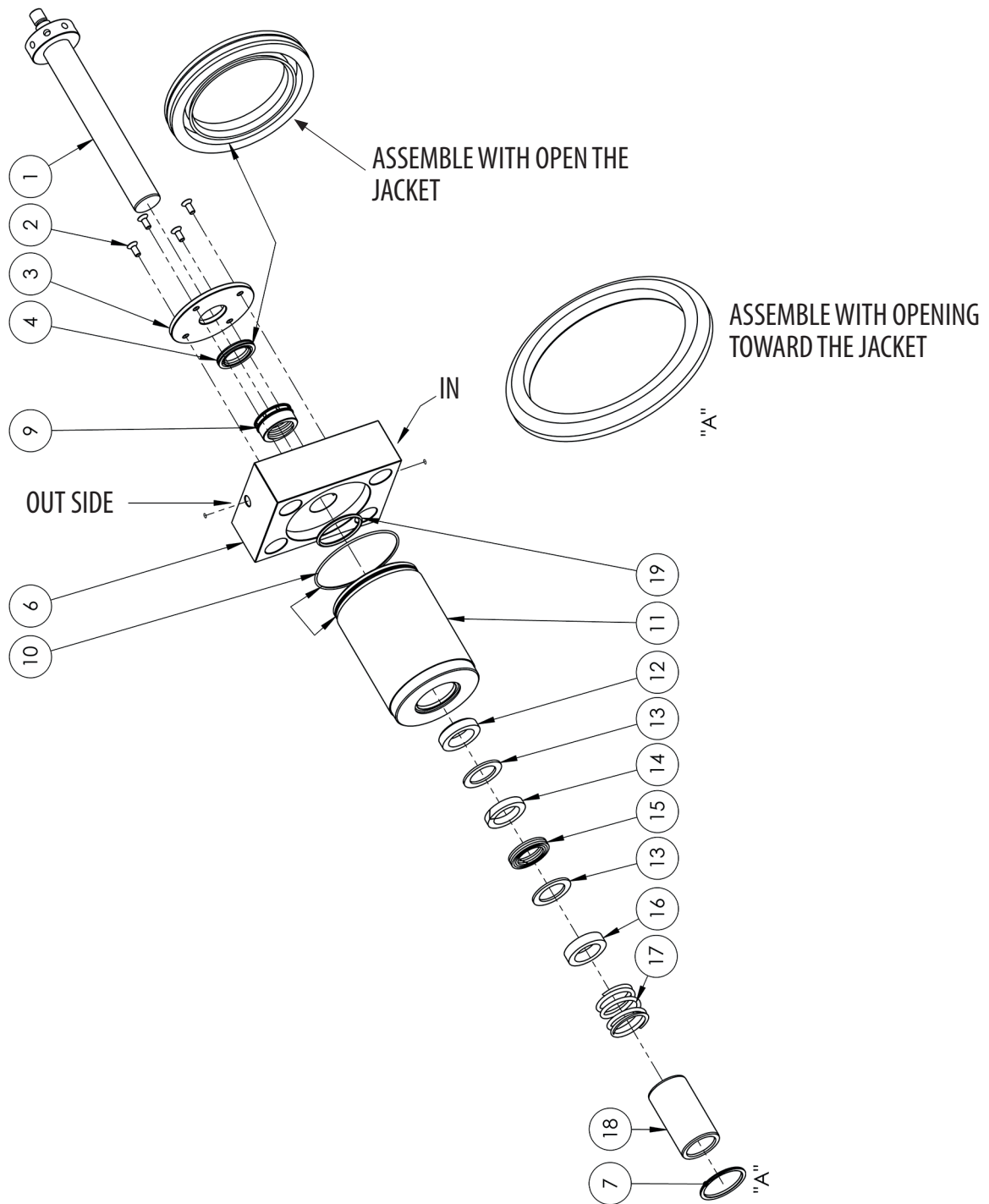
**HEAD SAP (P-32/P-45) PARTS LIST H 300-4 - CODE 1010.00420.0**

NOTE	ITEM	CODE	DESCRIPTION	QTY.
*	1	1200.00360.0	ALLEN SCREW	12
	2	1010.00759.0	HEAD	1
	3	1110.00872.0	SAP INTERMEDIATE	3
*	4	REPAIR KIT	O-RING	3
*	5	1110.01677.0	SUCTION DUTE	1
	6	1200.00107.0	PRESSURE WASHER	8
*	7	1200.00701.0	ALLEN SCREW	8
*	8	1300.00193.0	O-RING	3
*	9	REPAIR KIT	O-RING	6
	10	1200.00149.0	NUT	4
	11	1200.00363.0	PRESSURE WASHER	4
	12	1200.00359.0	THREADED STUD	4
	14	1110.01338.0	FLANGE	3
*	15	1500.00104.0	PRESSURE SPRING	3
*	16	1010.00104.0	SIX COVER	3
*	17	1100.00107.0	PRESSURE VALVE	3
*	20	1100.00108.0	DOUBLE SEAT	3
*	21	1100.00109.0	SUCTION VALVE	3
*	22	1500.00105.0	SUCTION SPRING	3
*	23	1110.01022.0	GUIDE SPRING	3
	25	REPAIR KIT	BACK RING	6
	26	1200.00163.0	ALLEN SCREW	6
	27	1110.00948.0	RUPTURE DISC BLOCK	1
	28	1300.00106.0	O-RING	1
	29	1110.01339.0	DISTANCE PIN	3
	30	1200.00369.0	GUIDE PIN	2
	31	1200.00171.0	ALLEN SCREW	4

Note: \* Common wear parts.

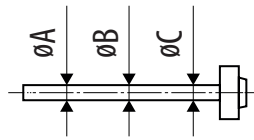
Note: \*\* 10 torque lifecyle (320 Nm) or 300 work hours (ITEM 31).

**PISTON KIT (P-26) - CODE 1010.00485.0**



REPLACE SEAL KIT EVERY 500 HOURS TO ENSURE SMOOTH EQUIPMENT OPERATION

NOTE: THE WATER QUALITY DIRECTLY INFLUENCES SEAL LIFECYCLE AND CHANGING TIME MUST BE REDUCED.



Ø Nominal	Appropriate	Critical	Change
26 mm	-0,01	-0,07	-0,1
	-0,06	-0,09	

ANALYSE PISTON DIMENSIONS WHEN CHANGING THE SEALS OR EVERY 500 HOURS RESPECT THE WEAR LIMIT.

PISTON KIT P-26 PARTS LIST H 300-4 - CODE 1010.00485.0				
NOTE	ITEM	CODE	DESCRIPTION	QTY.
*	1	1010.00331.0	PISTON KIT	3
	2	1200.00327.0	ALLEN SCREW	12
	3	1110.00858.0	SUPPORT DISC P-26	3
	5	2320.00303.0	STRAIGHT CONNECT	6
	6	1110.01112.0	FLANGE P-26	3
***	9	1010.01390.0	BEARING BUSHING	3
	10	1300.00242.0	O-RING	3
	11	1110.01513.0	JACKET P-26	3
**	17	1500.00110.0	SPRING P-26	3
	18	1110.01114.0	SUPPORT BUSHING P-26	3
		1020.00226.0	SEAL KIT P-26 SAP III	1

Note: \* Common wear parts.

Note: \*\* Replace with 1000h.

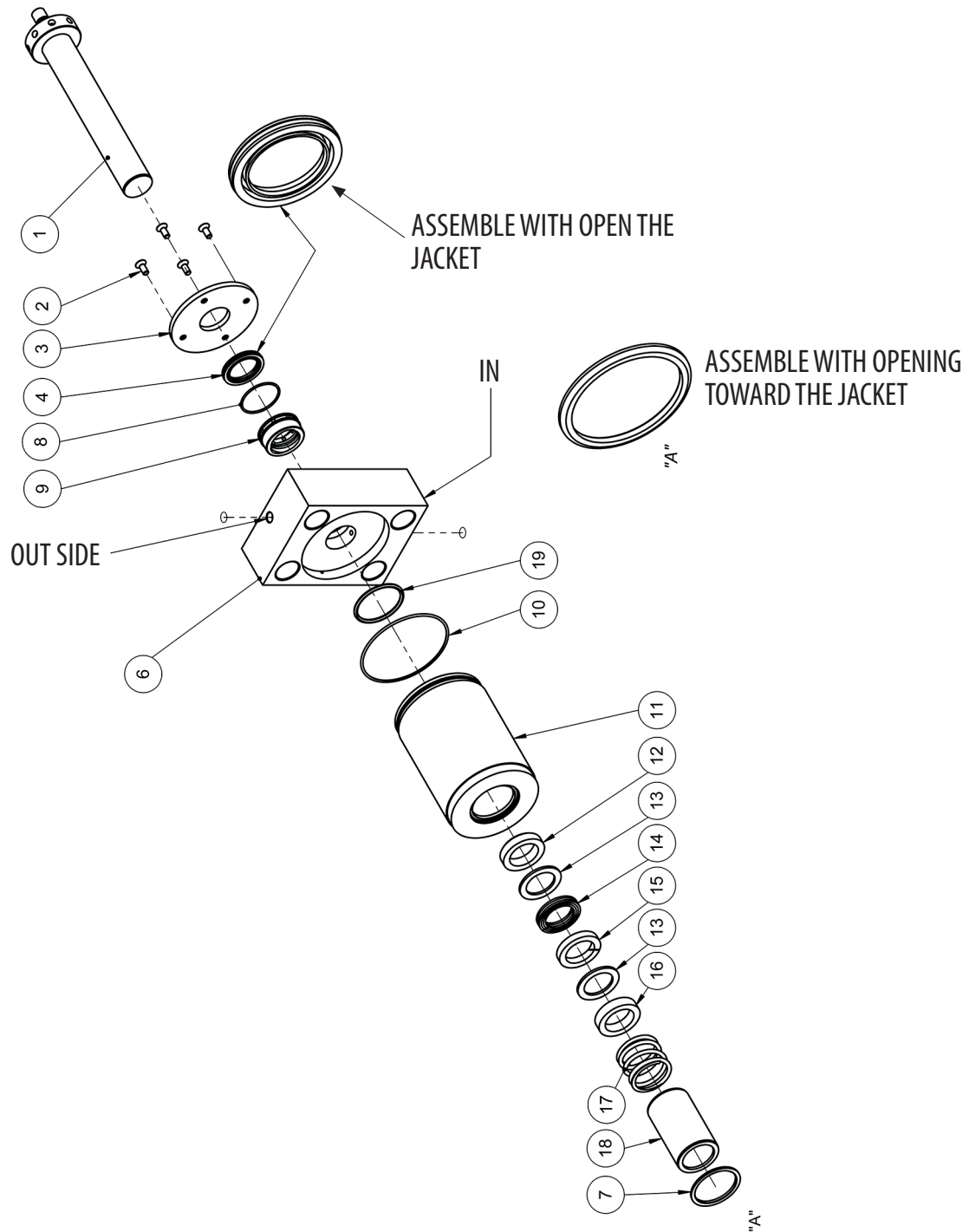
Note: \*\*\* Replace with 500h, or with wear parts.

SEAL KIT P-26 PARTS LIST H 300-4 - CODE 1020.00226.0			
NOTE	ITEM	DESCRIPTION	QTY.
*	4	VEDASEAL P-26	3
*	7	METALIC SEAL P-26	3
*	8	O-RING	3
*	12	LOWER SUPPORT RING P-26	3
*	13	SCRAPER RING P-26	6
*	14	LAMELA P-26	3
*	15	LAMELA P-26	3
*	16	UPPER SUPPORT RING P-26	3
*	19	O-RING	3

### CAUTION!

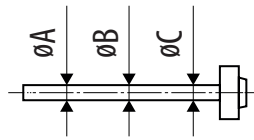
ALL SEAL KITS INCLUDE VEDASEAL (CODE 1300.00592.0L) HOWEVER; THIS ITEM (04) MAY BE PURCHASED SEPARATELY.

**PISTON KIT (P-28) - CODE 1010.00488.0**



REPLACE SEAL KIT EVERY 500 HOURS TO ENSURE SMOOTH EQUIPMENT OPERATION

NOTE: THE WATER QUALITY DIRECTLY INFLUENCES SEAL LIFECYCLE AND CHANGING TIME MUST BE REDUCED.



Ø Nominal	Appropriate	Critical	Change
28 mm	-0,01	-0,07	-0,1
	-0,06	-0,09	

ANALYSE PISTON DIMENSIONS WHEN CHANGING THE SEALS OR EVERY 500 HOURS RESPECT THE WEAR LIMIT.

#### PISTON KIT P-28 PARTS LIST H 300-4 - CODE 1010.00448.0

NOTE	ITEM	CODE	DESCRIPTION	QTY.
*	1	1010.00374.0	PISTON	3
	2	1200.00327.0	ALLEN SCREW	12
	3	1110.00859.0	SUPPORT DISC	3
	5	2320.00303.0	STRAIGHT CONNECT	6
	6	1110.01239.0	FLANGE P-28	3
***	9	1010.01389.0	BEARING BUSHING	3
	10	1300.00242.0	O-RING	3
	11	1110.01336.0	JACKET P-28	3
**	17	1500.00146.0	SPRING P-28	3
	18	1110.01240.0	SUPPORT BUSHING P-28	3
		1020.01240.0	SEAL KIT P-28 SAP III	1

Note: \* Common wear parts.

Note: \*\* Replace with 1000h.

Note: \*\*\* Replace with 500h, or with wear parts.

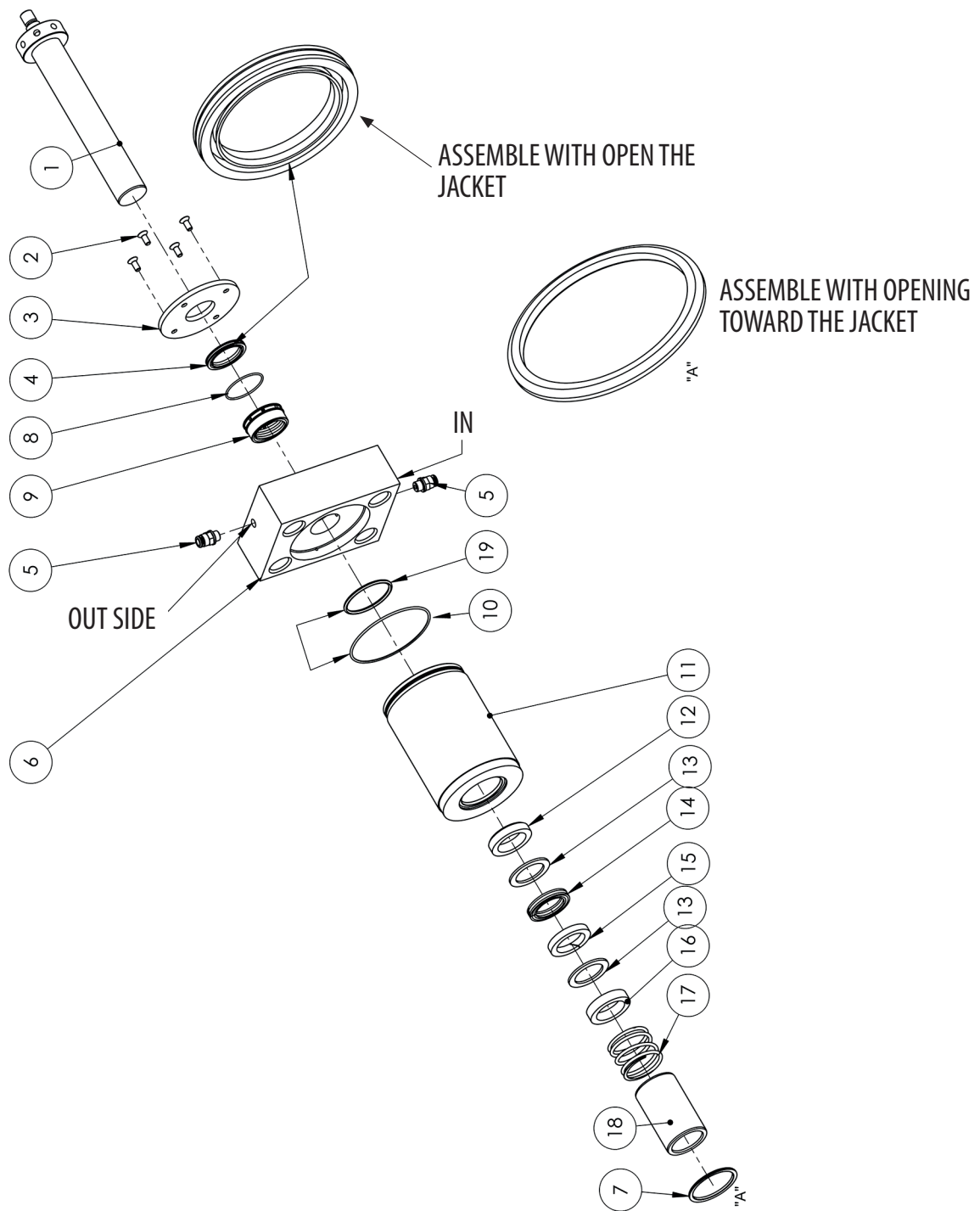
#### SEAL KIT P-28 PARTS LIST H 300-4 - CODE 1020.01240.0

NOTE	ITEM	DESCRIPTION	QTY.
*	4	VEDASEAL P-28	3
*	7	METALIC SEAL P-28	3
*	8	O-RING	3
*	12	LOWER SUPPORT RING P-28	3
*	13	SCRAPER RING P-28	6
*	14	LAMELA P-28	3
*	15	LAMELA P-28	3
*	16	UPPER SUPPORT RING P-28	3
*	19	O-RING	3

#### CAUTION!

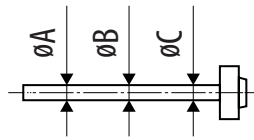
ALL SEAL KITS INCLUDE VEDASEAL (CODE 1300.00593.0L) HOWEVER; THIS ITEM (04) MAY BE PURCHASED SEPARATELY.

**PISTON KIT (P-30) - CODE 1010.00424.0**



REPLACE SEAL KIT EVERY 500 HOURS TO ENSURE SMOOTH EQUIPMENT OPERATION

NOTE: THE WATER QUALITY DIRECTLY INFLUENCES SEAL LIFECYCLE AND CHANGING TIME MUST BE REDUCED.



Ø Nominal	Appropriate	Critical	Change
30 mm	-0,01	-0,07	-0,1
	-0,06	-0,09	

ANALYSE PISTON DIMENSIONS WHEN CHANGING THE SEALS OR EVERY 500 HOURS RESPECT THE WEAR LIMIT.

PISTON KIT P-30 PARTS LIST H 300-4 - CODE 1010.00424.0				
NOTE	ITEM	CODE	DESCRIPTION	QTY.
*	1	1010.00468.0	PISTON KIT	3
	2	1200.00327.0	ALLEN SCREW	12
	3	1110.00860.0	SUPPORT DISC P-30	3
	5	2320.00303.0	STRAIGHT CONNECT	6
	6	1110.01357.0	FLANGE P-30	3
***	9	1010.01055.0	BEARING BUSHING	3
	10	1300.00242.0	O-RING	3
	11	1110.01353.0	JACKET P-30	3
**	17	1500.00111.0	SPRING P-30	3
	18	1110.01358.0	SUPPORT BUSHING P-30	3
		1020.00230.0	SEAL KIT P-30 SAP III	1

Note: \* Common wear parts.

Note: \*\* Replace with 1000h.

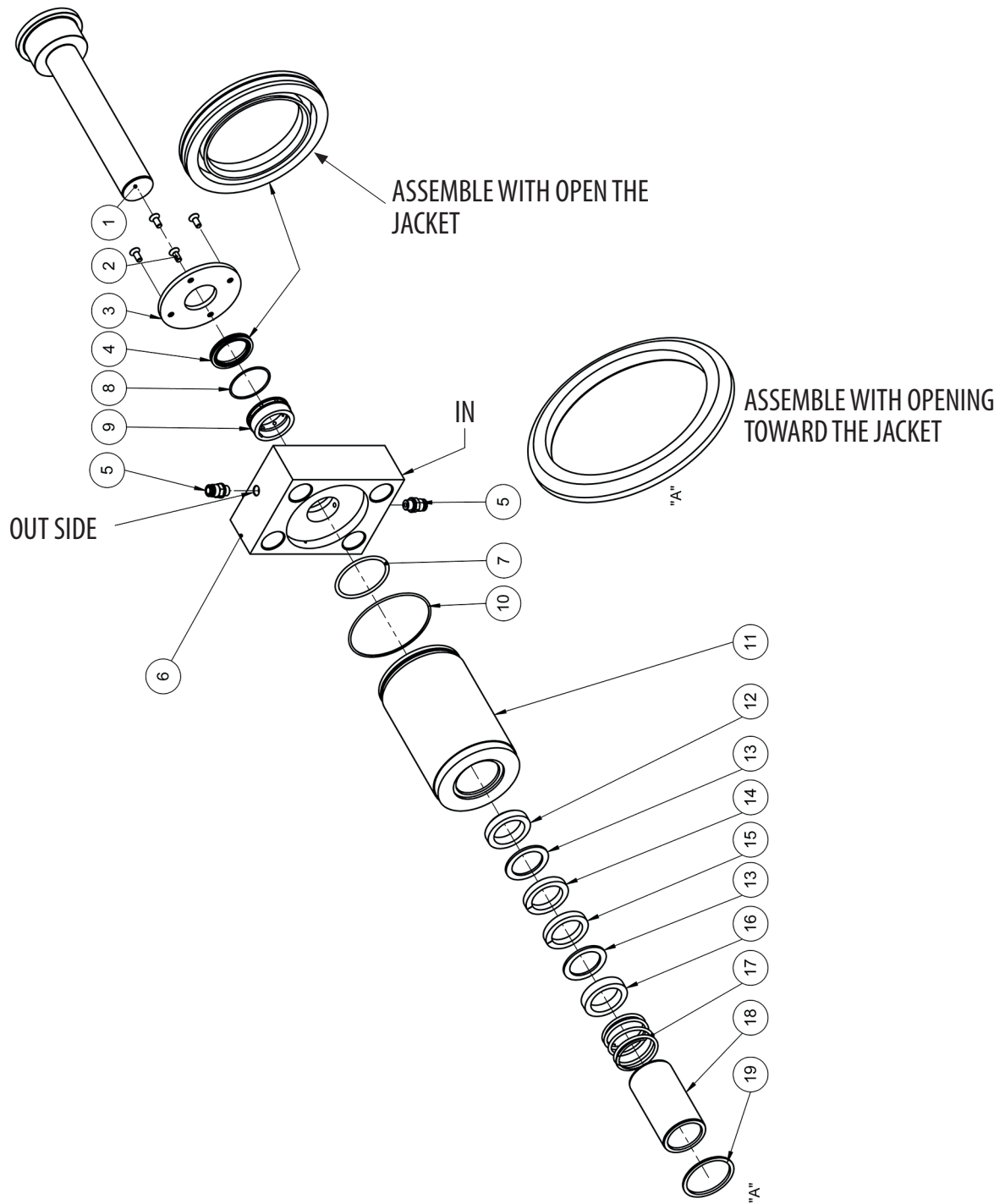
Note: \*\*\* Replace with 500h, or with wear parts.

SEAL KIT P-30 PARTS LIST H 300-4 - CODE 1020.00230.0			
NOTE	ITEM	DESCRIPTION	QTY.
*	4	VEDASEAL P-30	3
*	7	METALIC SEAL P-30	3
*	8	O-RING	3
*	12	LOWER SUPPORT RING P-30	3
*	13	SCRAPER RING P-30	6
*	14	LAMELA P-30	3
*	15	LAMELA P-30	3
*	16	UPPER SUPPORT RING P-30	3
*	19	O-RING	3

### CAUTION!

ALL SEAL KITS INCLUDE VEDASEAL (CODE 1300.00594.0L) HOWEVER; THIS ITEM (04) MAY BE PURCHASED SEPARATELY.

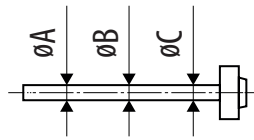
**PISTON KIT (P-32) - CODE 1010.00433.0**



REPLACE SEAL KIT EVERY 500 HOURS TO ENSURE SMOOTH EQUIPMENT OPERATION

NOTE: THE WATER QUALITY DIRECTLY INFLUENCES SEAL LIFECYCLE AND CHANGING TIME MUST BE REDUCED.





Ø Nominal	Appropriate	Critical	Change
32 mm	-0,01	-0,07	-0,1
	-0,06	-0,09	

ANALYSE PISTON DIMENSIONS WHEN CHANGING THE SEALS OR EVERY 500 HOURS RESPECT THE WEAR LIMIT.

PISTON KIT P-32 PARTS LIST H 300-4 - CODE 1010.00433.0				
NOTE	ITEM	CODE	DESCRIPTION	QTY.
*	1	1010.00434.0	PISTON KIT	3
	2	1200.00327.0	ALLEN SCREW	12
	3	1110.00931.0	SUPPORT DISC P-32	3
	5	2320.00303.0	STRAIGHT CONNECT	6
	6	1110.01348.0	FLANGE P-32	3
***	9	1010.01042.0	BEARING BUSHING	3
	10	1300.00242.0	O-RING	3
	11	1110.01422.0	JACKET P-32	3
**	17	1500.00148.0	SPRING P-32	3
	18	1110.00933.0	SUPPORT BUSHING P-32	3
		1020.00232.0	SEAL KIT P-32 SAP III	1

Note: \* Common wear parts.

Note: \*\* Replace with 1000h.

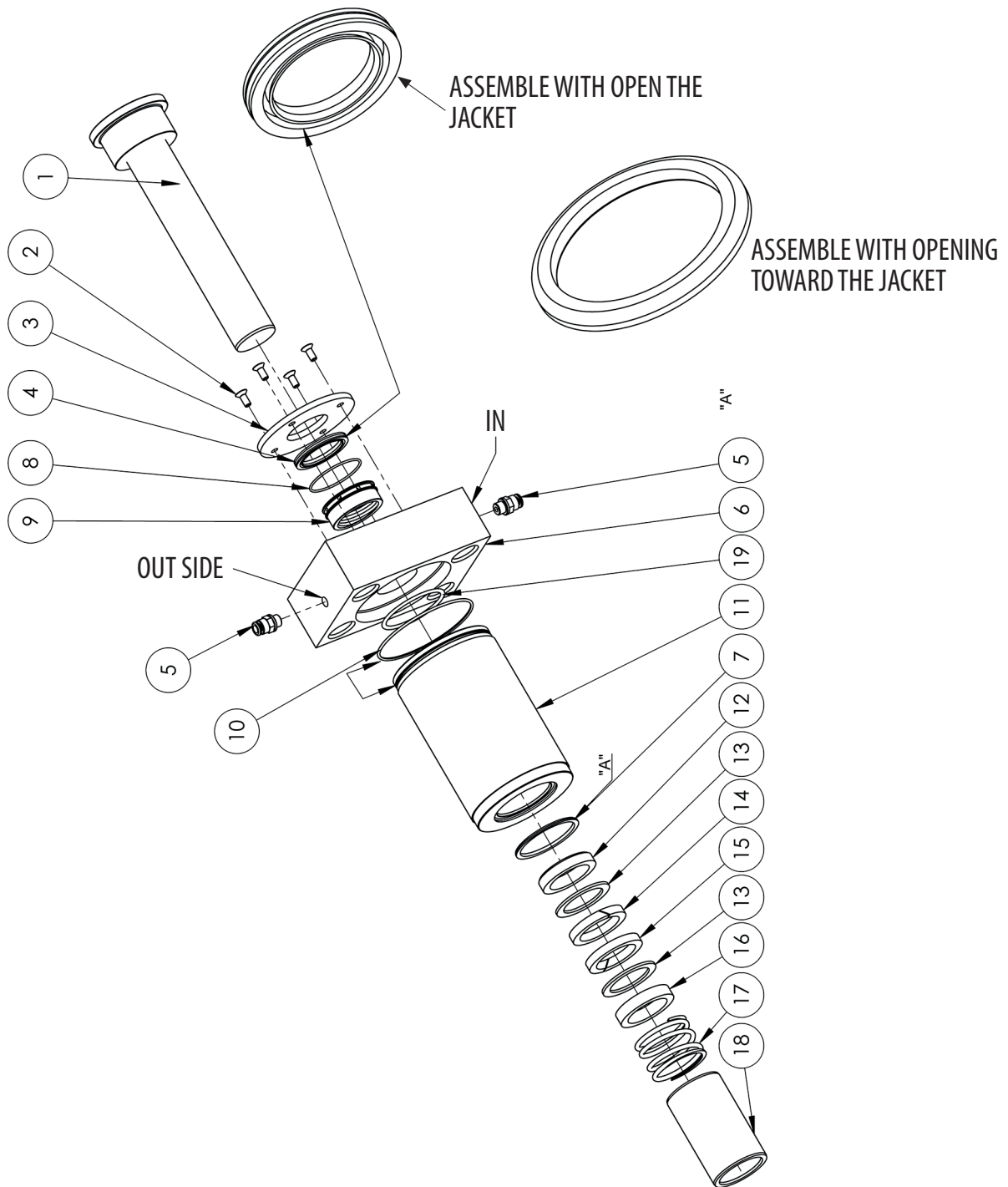
Note: \*\*\* Replace with 500h, or with wear parts.

SEAL KIT P-32 PARTS LIST H 300-4 - CODE 1020.00232.0			
NOTE	ITEM	DESCRIPTION	QTY.
*	4	VEDASEAL P-32	3
*	7	O-RING	3
*	8	O-RING	3
*	12	LOWER SUPPORT RING P-32	3
*	13	SCRAPER RING P-32	6
*	14	LAMELA P-32	3
*	15	LAMELA P-32	3
*	16	UPPER SUPPORT RING P-32	3
*	19	METALIC SEAL P-32	3

### CAUTION!

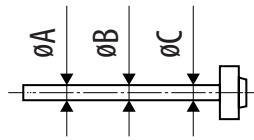
ALL SEAL KITS INCLUDE VEDASEAL (CODE 1300.00595.0L) HOWEVER; THIS ITEM (04) MAY BE PURCHASED SEPARATELY.

**PISTON KIT (P-35) - CODE 1010.00417.0**



REPLACE SEAL KIT EVERY 500 HOURS TO ENSURE SMOOTH EQUIPMENT OPERATION

NOTE: THE WATER QUALITY DIRECTLY INFLUENCES SEAL LIFECYCLE AND CHANGING TIME MUST BE REDUCED.



Ø Nominal	Appropriate	Critical	Change
35 mm	-0,01	-0,07	-0,1
	-0,06	-0,09	

ANALYSE PISTON DIMENSIONS WHEN CHANGING THE SEALS OR EVERY 500 HOURS RESPECT THE WEAR LIMIT.

PISTON KIT P-35 PARTS LIST H 300-4 - CODE 1010.00417.0				
NOTE	ITEM	CODE	DESCRIPTION	QTY.
*	1	1010.00406.0	PISTON KIT	3
	2	1200.00327.0	ALLEN SCREW	12
	3	1110.00969.0	SUPPORT DISC P-35	3
	5	2320.00303.0	STRAIGHT CONNECT	6
	6	1110.01337.0	FLANGE P-35	3
***	9	1010.01043.0	BEARING BUSHING	3
	10	1300.00242.0	O-RING	3
	11	1110.01421.0	JACKET P-35	3
**	17	1500.00151.0	SPRING P-35	3
	18	1110.00970.0	SUPPORT BUSHING P-35	3
		1020.00235.0	SEAL KIT P-35 SAP III	1

Note: \* Common wear parts.

Note: \*\* Replace with 1000h.

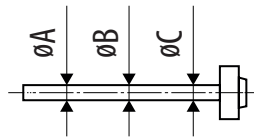
Note: \*\*\* Replace with 500h, or with wear parts.

SEAL KIT P-35 PARTS LIST H 300-4 - CODE 1020.00235.0			
NOTE	ITEM	DESCRIPTION	QTY.
*	4	VEDASEAL P-35	3
*	7	METALIC SEAL P-35	3
*	8	O-RING	3
*	12	LOWER SUPPORT RING P-35	3
*	13	SCRAPER RING P-35	6
*	14	LAMELA P-35	3
*	15	LAMELA P-35	3
*	16	UPPER SUPPORT RING P-35	3
*	19	O-RING	3

### CAUTION!

ALL SEAL KITS INCLUDE VEDASEAL (CODE 1300.00596.0L) HOWEVER; THIS ITEM (04) MAY BE PURCHASED SEPARATELY.





Ø Nominal	Appropriate	Critical	Change
40 mm	-0,01	-0,07	-0,1
	-0,06	-0,09	

ANALYSE PISTON DIMENSIONS WHEN CHANGING THE SEALS OR EVERY 500 HOURS RESPECT THE WEAR LIMIT.

PISTON KIT P-40 PARTS LIST H 300-4 - CODE 1010.01375.0				
NOTE	ITEM	CODE	DESCRIPTION	QTY.
*	1	1010.00626.0	PISTON KIT	3
	2	1110.01587.0	SUPPORT DISC P-40	3
	3	1200.00327.0	ALLEN SCREW	12
***	5	1010.00596.0	BEARING BUSHING	3
	6	1110.01578.0	FLANGE P-40	3
	7	2320.00303.0	STRAIGHT CONNECT	6
	9	1300.00242.0	O-RING	3
	10	1110.02909.0	JACKET P-40	3
**	17	1500.00165.0	SPRING P-40	3
	18	1110.02910.0	SUPPORT BUSHING P-40	3
		1020.00240.1	SEAL KIT P-40 SAP III	1

Note: \* Common wear parts.

Note: \*\* Replace with 1000h.

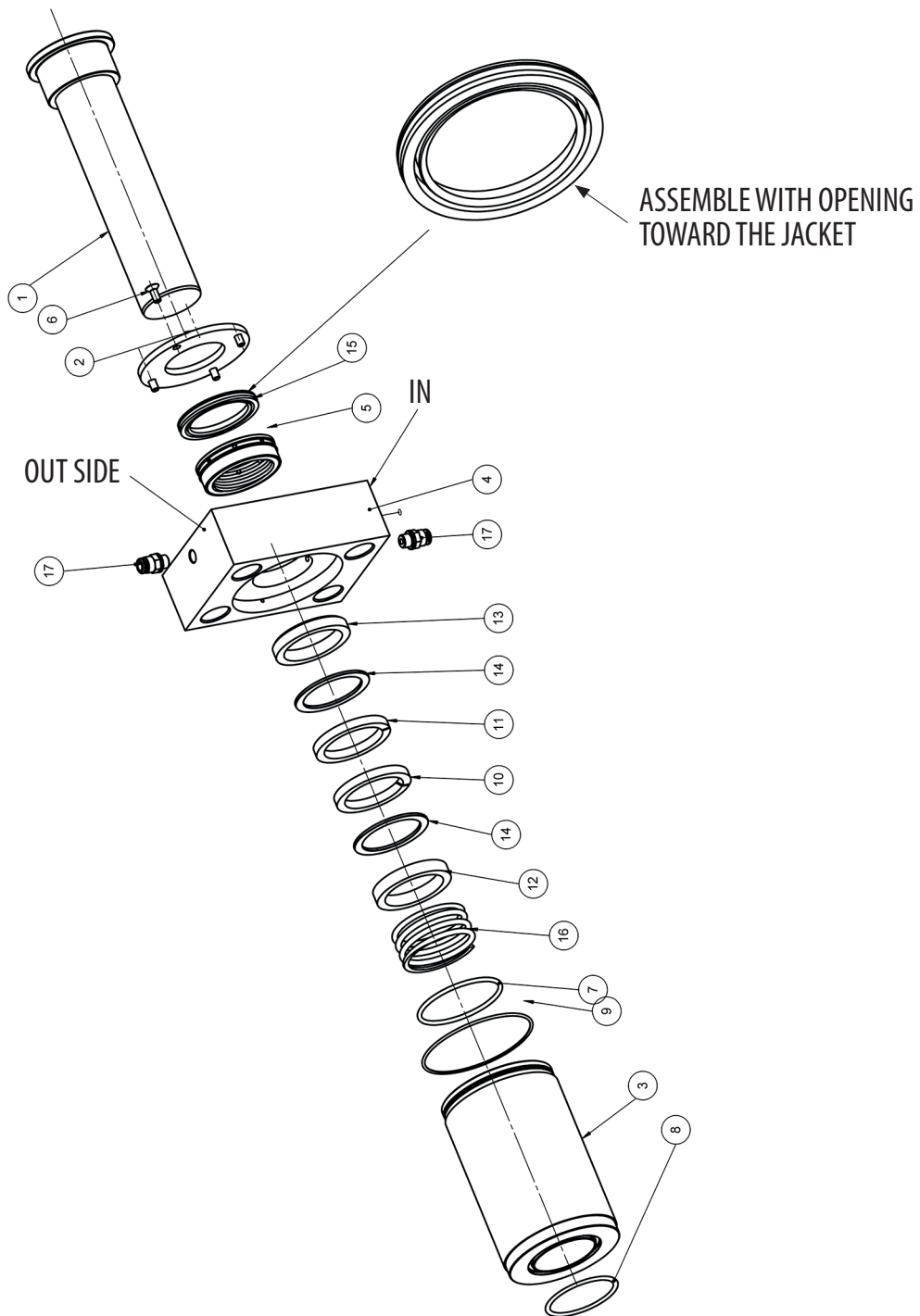
Note: \*\*\* Replace with 500h, or with wear parts.

SEAL KIT P-40 PARTS LIST H 300-4 - CODE 1020.00240.1			
NOTE	ITEM	DESCRIPTION	QTY.
*	4	VEDASEAL P-40	3
*	8	O-RING	3
*	11	O-RING	3
*	12	LOWER SUPPORT RING P-40	3
*	13	SCRAPER RING P-40	6
*	14	LAMELA P-40	3
*	15	LAMELA P-40	3
*	16	UPPER SUPPORT RING P-40	3

### CAUTION!

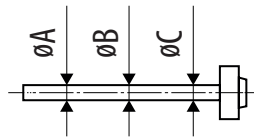
ALL SEAL KITS INCLUDE VEDASEAL (CODE 1300.00683.0L) HOWEVER; THIS ITEM (04) MAY BE PURCHASED SEPARATELY.

**PISTON KIT (P-45) - CODE 1010.00869.0**



REPLACE SEAL KIT EVERY 500 HOURS TO ENSURE SMOOTH EQUIPMENT OPERATION

NOTE: THE WATER QUALITY DIRECTLY INFLUENCES SEAL LIFECYCLE AND CHANGING TIME MUST BE REDUCED.



Ø Nominal	Appropriate	Critical	Change
45 mm	-0,01	-0,07	-0,1
	-0,06	-0,09	

ANALYSE PISTON DIMENSIONS WHEN CHANGING THE SEALS OR EVERY 500 HOURS RESPECT THE WEAR LIMIT.

PISTON KIT P-45 PARTS LIST H 300-4 - CODE 1010.00869.0				
NOTE	ITEM	CODE	DESCRIPTION	QTY.
*	1	1010.00870.0	PISTON	3
	2	1110.01006.0	SUPPORT DISC P-45	3
	3	1110.01494.0	JACKET P-45	3
	4	1110.01495.0	FLANGE P-45	3
***	5	1010.00855.0	BEARING BUSHING	3
	6	1200.00327.0	ALLEN SCREW	12
	9	1300.00242.0	O-RING	3
**	16	1500.00153.0	SPRING P-45	3
	17	2320.00303.0	STRAIGHT CONNECT	6
		1020.00245.0	SEAL KIT P-45 SAP III	1

Note: \* Common wear parts.

Note: \*\* Replace with 1000h.

Note: \*\*\* Replace with 500h, or with wear parts.

SEAL KIT P-45 PARTS LIST H 300-4 - CODE 1020.00245.0			
NOTE	ITEM	DESCRIPTION	QTY.
*	7	O-RING	3
*	8	O-RING	3
*	10	LAMELA P-45	3
*	11	LAMELA P-45	3
*	12	UPPER SUPPORT RING	6
*	13	LOWER SUPPORT RING	3
*	14	SCRAPER RING	6
*	15	VEDASEAL	3

### CAUTION!

ALL SEAL KITS INCLUDE VEDASEAL (CODE 1300.00638.0L) HOWEVER; THIS ITEM (15) MAY BE PURCHASED SEPARATELY.



Comet S.p.a. - Via G. Dorso, 4 42124 Reggio Emilia - ITALY  
Tel. +39 0522 386111  
Export: e-mail: [export@comet.re.it](mailto:export@comet.re.it) › fax 0039 0522 386280  
Italia: e-mail: [vendite@comet.re.it](mailto:vendite@comet.re.it) › fax 0039 0522 386300  
[www.comet-spa.com](http://www.comet-spa.com)